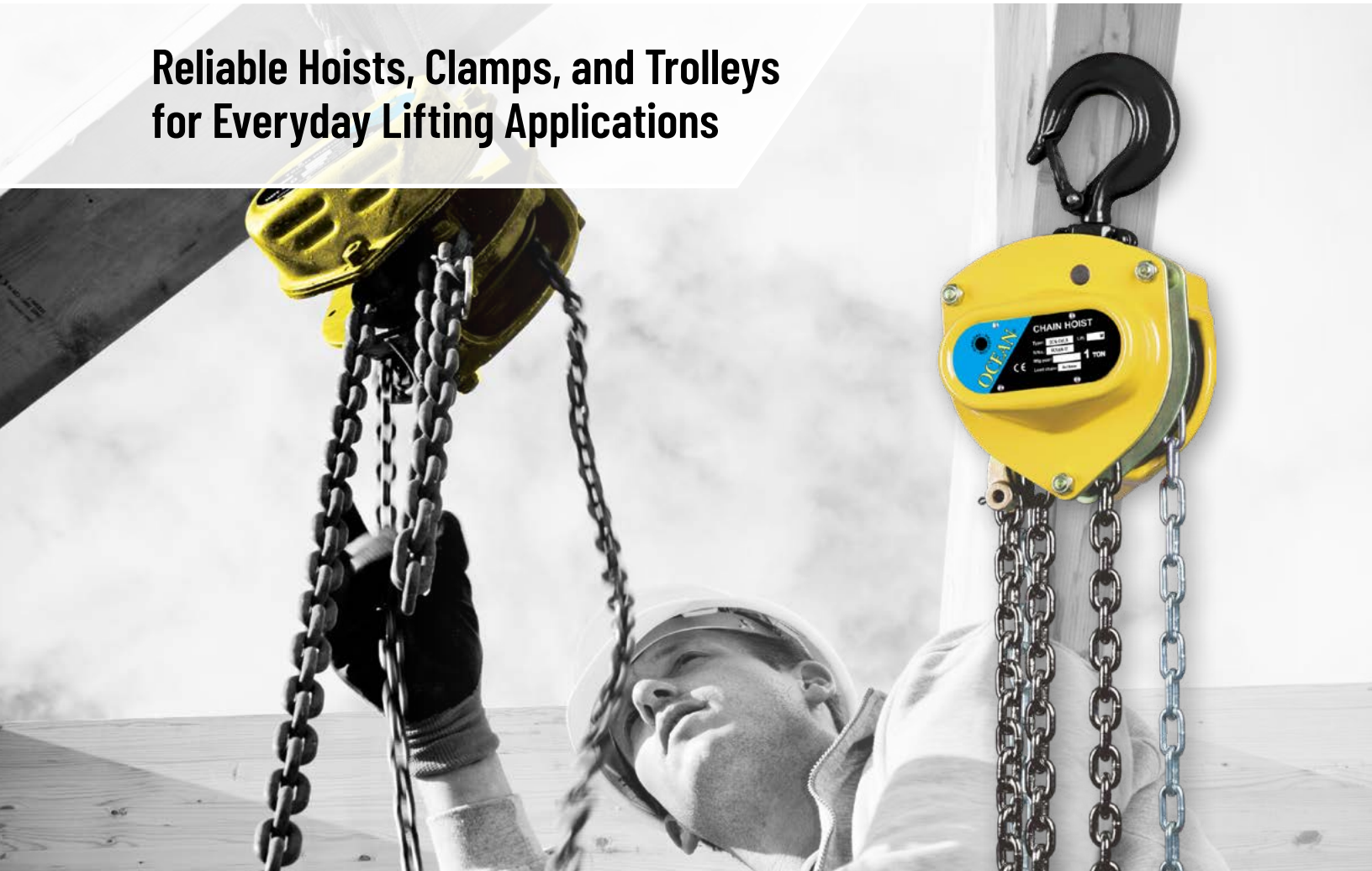


OCEAN[®]

RIGGING HARDWARE & PRODUCTS

CHAIN HOISTS

Reliable Hoists, Clamps, and Trolleys
for Everyday Lifting Applications



Authorized Distributor



Find Ocean[®] Products on Lifting.com

OCEAN[®] CHAIN HOISTS

RELIABLE MANUAL LIFTING FOR EVERYDAY DEMANDS

HIGH-STRENGTH STEEL BODY AND GEAR HOUSING

Exceptional durability and long service life, even under heavy-duty use.

OVERLOAD PROTECTION: INTEGRATED MECHANICAL OVERLOAD PROTECTION

Prevents damage caused by excessive loading, ensuring product and operator safety.

INVOLUTE SPLINES CONNECT BRAKE SEAT AND DRIVING SHAFT

Stronger brake effect and parts are easy to disassemble for maintenance or repair.

BLACK ELECTROPHORESIS 680 CHAIN

Enhanced resistance to corrosion and reliable lifting performance.

COMPACT, ERGONOMIC DESIGN: REDUCED WEIGHT AND BALANCED FRAME

Easy handling, transport, and positioning in tight spaces.

360° SWIVEL HOOKS: HEAT-TREATED TOP AND BOTTOM HOOKS WITH CAST SAFETY LATCHES

Flexible handling and prevent twisting of the load chain during operation.

OPENING STYLE COVER WITH CURVED EDGE

Easy hand chain replacement and smooth operation.

PRECISION-MACHINED COMPONENTS

Smooth operation, reduced wear, and max load efficiency.

ANTI-CORROSION FINISHES

Superior rust protection, extending lifespan in humid or outdoor environments.

DUAL PAWL BRAKE SYSTEM: INDEPENDENT 2XPAWL MECHANISM

Secure load holding and improved safety during lifting and lowering operations.

TESTED TO ANSI/ASME STANDARDS

Engineered for reliability in North America market.

CAPACITY 0.5-10 TON OPTIONS

Suited for general use and everyday applications.

OCEAN[®] CHAIN HOIST MODELS

RELIABLE MANUAL LIFTING ENGINEERED FOR EVERYDAY DEMANDS

Engineered to perform in the most demanding lifting environments, the Ocean[®] Manual Chain Hoist combines robust construction, advanced corrosion protection, and precision engineering.

Designed for professionals who demand reliability, safety, and efficiency, Ocean[®] Chain Hoists deliver consistent performance across construction, industrial, and maintenance applications – *day after day, lift after lift.*

Steel Construction

Overload Protection

ASME Compliant

ANSI Compliant

Chain Lengths: 10', 15', 20', No Chain

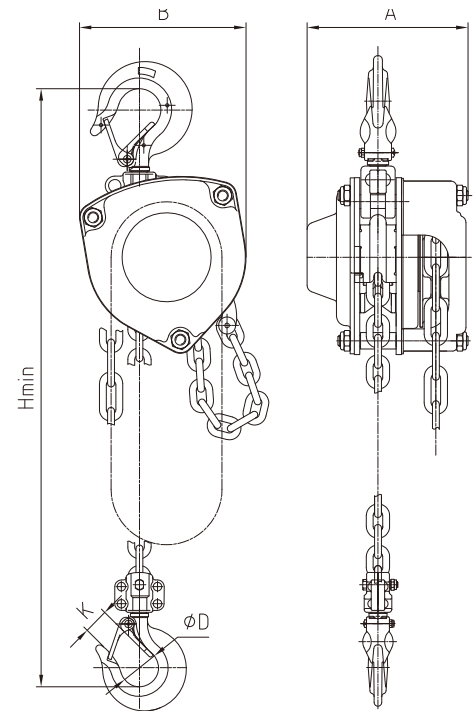
Color: Yellow

Certifications: ANSI / ASME

Power: Manual

Country of Origin: China

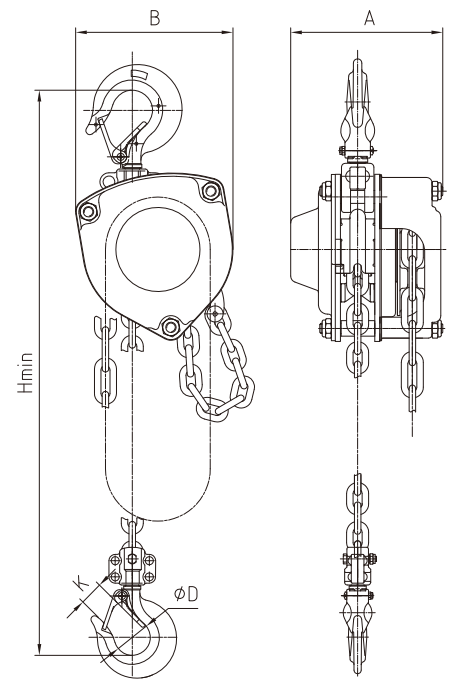
Warranty: 2 yrs



Ocean [®] Brand Chain Hoist Capacities (tons)		0.5T	1.0T	1.5T	2.0T	3.0T	5.0T	10T
Model		OCN-CH0.5	OCN-CH1.0	OCN-CH1.5	OCN-CH2.0	OCN-CH3.0	OCN-CH5.0	OCN-CH10
Capacity (lbs.)		1100	2200	3300	4400	6600	11000	22000
Dimensions (in.)	A	5.04	5.45	6.34	6.34	6.34	7.09	7.64
	B	4.80	5.83	6.89	6.89	9.13	10.16	15.12
	H-min	11.61	13.58	16.14	16.97	16.30	23.62	31.42
	D	1.38	1.57	1.77	2.05	2.17	2.68	3.35
	K	0.87	1.02	1.14	1.38	1.54	1.69	2.28
Net Weight (with 10' of chain)		16.98	24.47	36.82	38.80	54.67	86.42	184.97
Load Chain (mm)		5X15	6X18	8X24	8X24	10X30	10X30	10X30
Strands of Load Chain (#)		1	1	1	1	2	2	4
Effort Required to Lift Rated Load (lbf.)		47.21	66.99	82.73	96.67	85.2	103.41	109.71
Strands Lift	Depends on selected chain length: No Chain, 10 ft., 15 ft., or 20ft.							
SKU by Chain Length	No Chain	OCN-CH0.5NC	OCN-CH1.0NC	OCN-CH1.5NC	OCN-CH2.0NC	OCN-CH3.0NC	OCN-CH5.0NC	OCN-CH10NC
	10' Chain	OCN-CH0.5-10	OCN-CH1.0-10	OCN-CH1.5-10	OCN-CH2.0-10	OCN-CH3.0-10	OCN-CH5.0-10	OCN-CH10-10
	15' Chain	OCN-CH0.5-15	OCN-CH1.0-15	OCN-CH1.5-15	OCN-CH2.0-15	OCN-CH3.0-15	OCN-CH5.0-15	OCN-CH10-15
	20' Chain	OCN-CH0.5-20	OCN-CH1.0-20	OCN-CH1.5-20	OCN-CH2.0-20	OCN-CH3.0-20	OCN-CH5.0-20	OCN-CH10-20

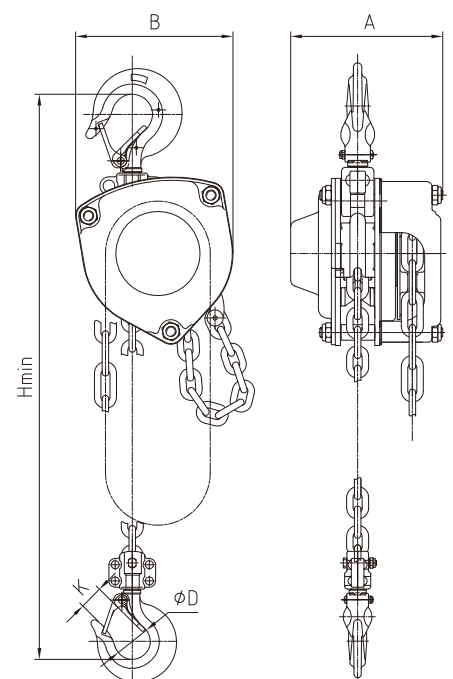
MODEL OCN-CH0.5 SPECIFICATIONS

0.5 Ton Ocean® Chain Hoist Chain Lengths	10FT.	15FT.	20FT	NO CHAIN
SKU	OCN-CH0.5-10	OCN-CH0.5-15	OCN-CH0.5-20	OCN-CH0.5-NC
STRANDS LIFT (ft.)	10	15	20	N/A
Hand Chain (mm): 5x25	Certifications: ANSI / ASME			
Load Chain (mm): 5X15	Warranty: 2 yrs			
Strands of Load Chain (#): 1	Color: Yellow			
Effort Required to Lift	Power: Manual			
Rated Load (lbf.): 47.21	Overload Protection: Included			
Country of Origin: China	Net Weight: 16.98 (with 10' of chain)			
DIMENSIONS (in.)				
A: 5.04	D: 1.38			
B: 4.80	K: 0.87			
H-Min: 11.61	Capacity (lbs.): 1100			



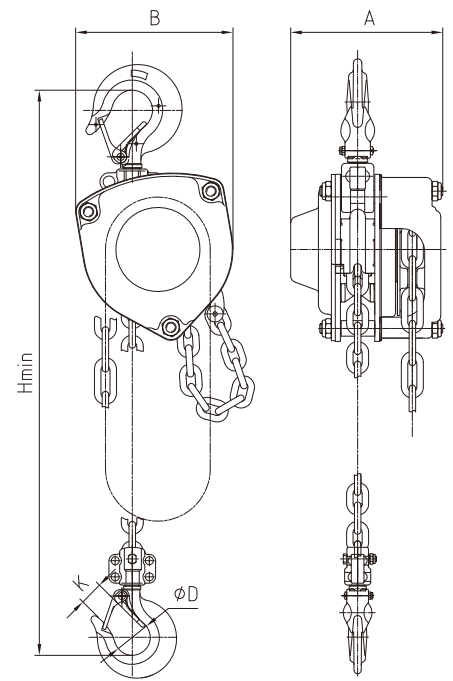
MODEL OCN-CH1.0 SPECIFICATIONS

1.0 Ton Ocean® Chain Hoist Chain Lengths	10FT.	15FT.	20FT	NO CHAIN
SKU	OCN-CH1.0-10	OCN-CH1.0-15	OCN-CH1.0-20	OCN-CH1.0-NC
STRANDS LIFT (ft.)	10	15	20	N/A
Hand Chain (mm): 5x25	Certifications: ANSI / ASME			
Load Chain (mm): 6X18	Warranty: 2 yrs			
Strands of Load Chain (#): 1	Color: Yellow			
Effort Required to Lift	Power: Manual			
Rated Load (lbf.): 66.99	Overload Protection: Included			
Country of Origin: China	Net Weight: 24.47 (with 10' of chain)			
DIMENSIONS (in.)				
A: 5.45	D: 1.57			
B: 5.83	K: 1.02			
H-Min: 13.58	Capacity (lbs.): 2200			



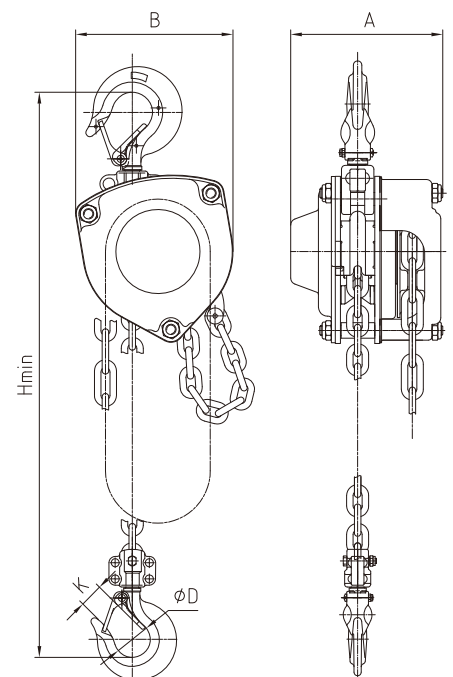
MODEL OCN-CH1.5 SPECIFICATIONS

1.5 Ton Ocean® Chain Hoist Chain Lengths	10FT.	15FT.	20FT	NO CHAIN
SKU	OCN-CH1.5-10	OCN-CH1.5-15	OCN-CH1.5-20	OCN-CH1.5-NC
STRANDS LIFT (ft.)	10	15	20	N/A
Hand Chain (mm): 5x25	Certifications: ANSI / ASME			
Load Chain (mm): 8X24				
Strands of Load Chain (#): 1	Warranty: 2 yrs			
Effort Required to Lift	Color: Yellow			
Rated Load (lbf.): 82.73	Power: Manual			
Country of Origin: China	Overload Protection: Included			
	Net Weight: 36.82 (with 10' of chain)			
DIMENSIONS (in.)				
A: 6.34	D: 1.77			
B: 6.89	K: 1.14			
H-Min: 16.14	Capacity (lbs.): 3300			



MODEL OCN-CH2.0 SPECIFICATIONS

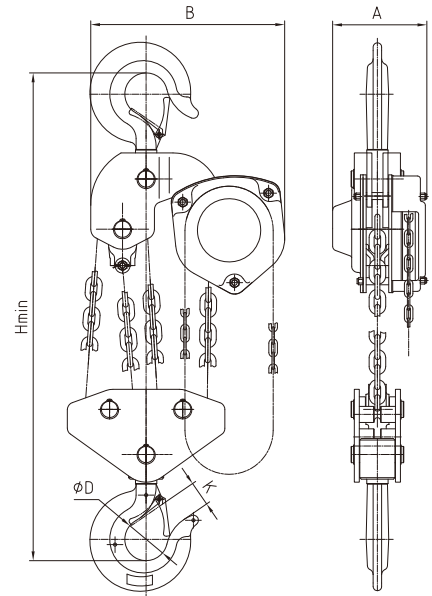
2.0 Ton Ocean® Chain Hoist Chain Lengths	10FT.	15FT.	20FT	NO CHAIN
SKU	OCN-CH2.0-10	OCN-CH2.0-15	OCN-CH2.0-20	OCN-CH2.0-NC
STRANDS LIFT (ft.)	10	15	20	N/A
Hand Chain (mm): 5x25	Certifications: ANSI / ASME			
Load Chain (mm): 8X24				
Strands of Load Chain (#): 1	Warranty: 2 yrs			
Effort Required to Lift	Color: Yellow			
Rated Load (lbf.): 96.67	Power: Manual			
Country of Origin: China	Overload Protection: Included			
	Net Weight: 38.80 (with 10' of chain)			
DIMENSIONS (in.)				
A: 6.34	D: 2.05			
B: 6.89	K: 1.38			
H-Min: 16.97	Capacity (lbs.): 4400			



MODEL OCN-CH10 SPECIFICATIONS

10 Ton Ocean® Chain Hoist
Chain Lengths

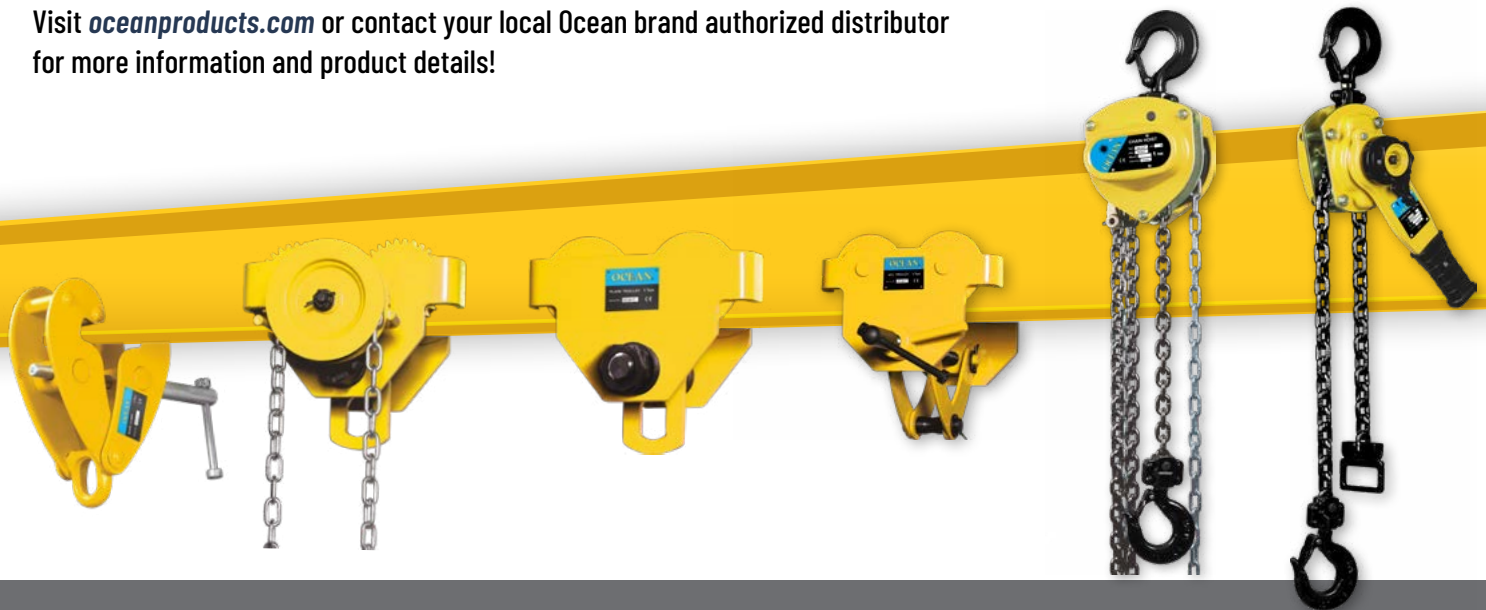
	10FT.	15FT.	20FT	NO CHAIN
SKU	OCN-CH10-10	OCN-CH10-15	OCN-CH10-20	OCN-CH10-NC
STRANDS LIFT (ft.)	10	15	20	N/A
Hand Chain (mm): 5x25	Certifications: ANSI / ASME			
Load Chain (mm): 10X30				
Strands of Load Chain (#): 4	Warranty: 2 yrs			
Effort Required to Lift	Color: Yellow			
Rated Load (lbf.): 109.71	Power: Manual			
Country of Origin: China	Overload Protection: Included			
DIMENSIONS (in.)	Net Weight: 184.97 (with 10' of chain)			
A: 7.64	D: 3.35			
B: 15.12	K: 2.28			
H-Min: 31.42	Capacity (lbs.): 22000			



OCEAN® RIGGING HARDWARE & PRODUCTS - SOLVE YOUR EVERYDAY LIFTING NEEDS

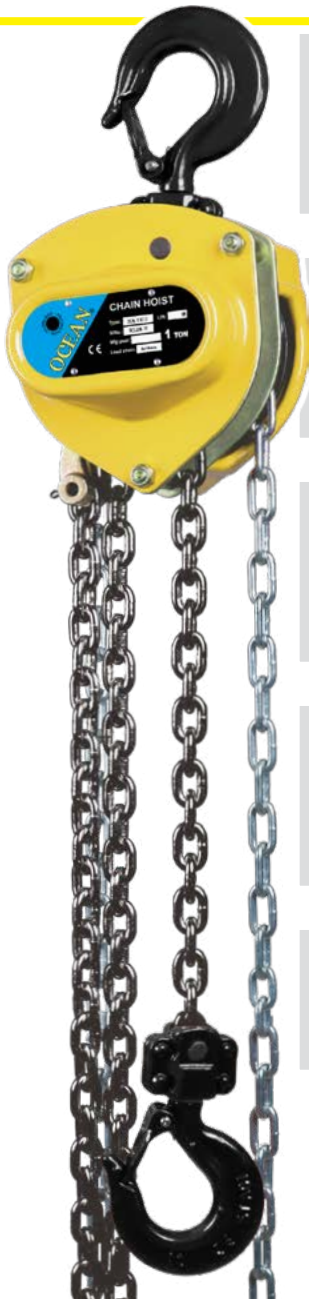
Designed to perform where others fail, Ocean® combines rugged durability with operator comfort. With industry-leading corrosion resistance and safety built into every detail, Ocean Hoists are the trusted choice for teams that demand more from their lifting equipment.

Visit oceanproducts.com or contact your local Ocean brand authorized distributor for more information and product details!



OCEAN[®] CHAIN HOISTS

Ocean[®] Chain Hoists are available in multiple capacities and lift lengths, making them versatile for construction, industrial maintenance, marine, and logistics applications. Featuring anti-corrosive chains, reinforced body protection and overload safety, Ocean Hoists ensure dependable performance where strength and safety matter most.



INTEGRATED MECHANICAL OVERLOAD PROTECTION

Prevents damage caused by excessive loading, ensuring product and operator safety.

HIGH-STRENGTH STEEL BODY AND GEAR HOUSING

Exceptional durability and long service life, even under heavy-duty use.

BLACK ELECTROPHORESIS 680 CHAIN

Enhanced resistance to corrosion and reliable lifting performance.

ANTI-CORROSION FINISHES

Superior lifespan in humid or outdoor environments.

TESTED TO ANSI/ASME STANDARDS

Engineered for reliability in North America market.

BUILT TO LIFT. BUILT TO LAST.

**BISHOP
LIFTING**